



SCOUTABOUT

1956

ONE SHILLING

The Chester & District
Boy Scouts Association



PRESENT

SCOUTABOUT

IN THE
ROYALTY THEATRE
CHESTER

Week commencing 10th December, 1956

at 7 p.m.



*For Exclusive Sweets, Candies
and Chocolates
the Selection is unequalled*

*In really charming Afternoon Teas
in pleasing environment and soft music
we excel*



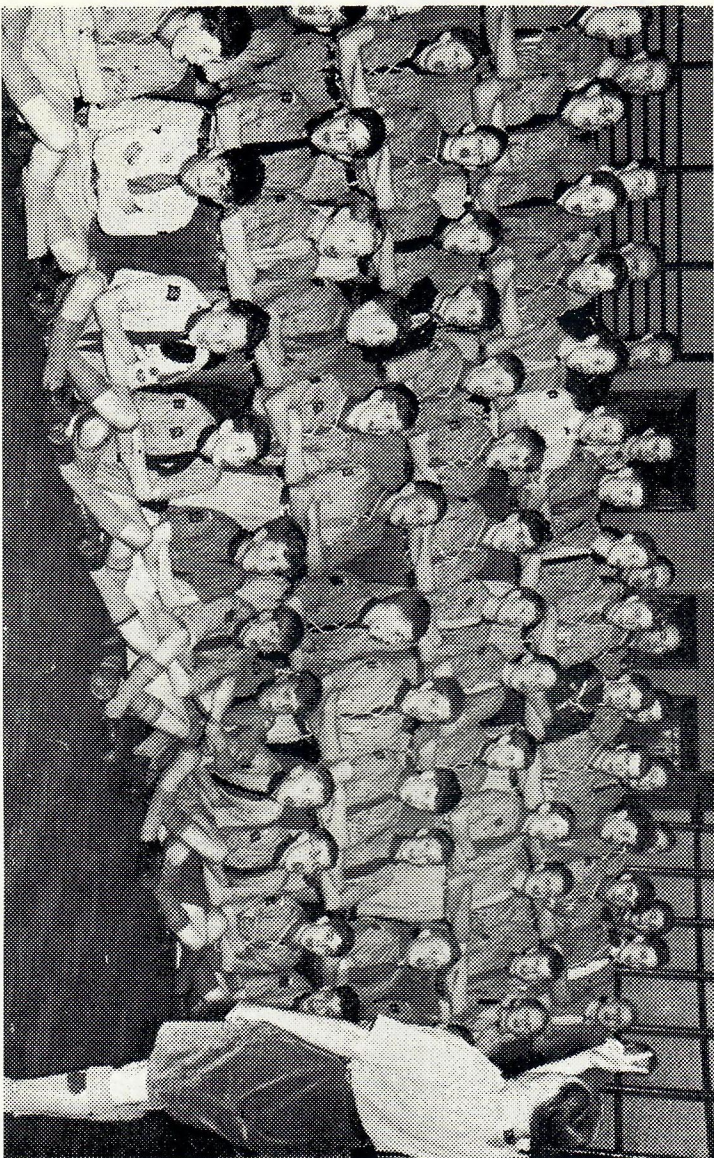
THE GROTTTO

30 Northgate Street and
11b Upper Northgate Street

Tel. Chester 21781



SCOUTABOUT 1956



By courtesy of

THE GANG (OR MOST OF THEM) WITH THE PRODUCER
AT A REHEARSAL

Chester Chronicle

BRASSEY of CHESTER

— *for* —

Tools of highest quality

for all trades

Cooking Utensils

Baths, Basins

Grates, Tiled Surrounds

Household Electrical

Goods of all sorts

Heating Stoves, Paints

Roofing Felts

Dairy Equipment

Raleigh Cycles

Gardening Tools

Cutlery

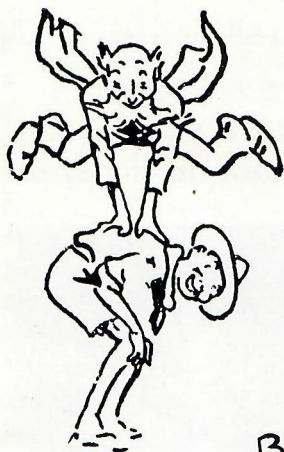
Pressure Cookers, etc.

*We are Lawn Mower Specialists — have
that Mower overhauled now, so as to be
ready for the season*

J. E. BRASSEY & SON LTD.

7 ST. JOHN STREET, CHESTER

Telephone 24165



Bill Allmark
 Freddy Ankers
 Graham Ashley
 Ron Astle
 John Barnes
 Peter Behan
 Lester Bennett
 Roger Bennett
 Ted Birkett
 Jimmy Bottome
 David Braithwaite
 Keith Brassington
 Leslie Brooks
 Winston Brown
 Dermot Campbell
 Donald Campbell
 Dave Capstick
 David Carter
 Bob Chaloner
 Roger Clegg
 Andrew Cook
 Bob Coupland
 John Crabbe
 Colin Cresswell
 Fred Darlington
 Chris. Davis
 Ian Davies
 Jamie Davies
 John Davies
 Leonard Davies
 Tony Davies
 Peter Dawson
 Michael Dentith
 David Dodd
 Brian Dunlea
 John Eaton
 Peter Eaton
 Marsh Edwards

THE GANG

Martin Farmer
 Brian Farrell
 Roy Fisher
 Terence Gallagher
 William Gallagher
 John Goode
 David Goodwin
 Norman Gough
 Howard Greene
 Donald Greig
 Roger Hammond
 John Harrison
 Graham Hart
 Graham Hartley
 David Higgins
 David Hinge
 Michael Holland
 Chris. Houlbrook
 Tom Hughes
 John Hurd
 Tony Hyde
 Graham Jackson
 Trevor James
 Christopher Jerome
 Peter John
 Iain Jolly
 Alan Jones
 Brian Jones
 Hugh Jones
 Norman Jones
 John Joslin
 Martin Knowles
 Peter Knowles
 Tom Lawrence
 Billy Lloyd
 Ian Maloney
 Eric Manley
 Geoffrey Mason
 Adrian Massey
 Brian Maxwell
 Peter McElhinney
 David Mellor
 Geoffrey Morris
 Tony Morris
 David Moss
 Robert Munson
 John Nicholson
 Ken Parkinson
 David Paterson
 Graham Patterson
 Les Phillips
 Terence Powell

Ray Prescott
 Peter Renard
 Ronnie Rimington
 Francis Ritter
 Eddie Roberts
 Michael Roberts
 Peter Roberts
 Donald Robinson
 Jim Rocke
 Michael Rowlandson
 Arthur Rumsey
 Trevor Rumsey
 Paul Shelley
 Cyril Spilsbury
 Michael Summers
 Geoffrey Taylor
 Robin Taylor
 Bob Thomson
 Robert Thomson
 Leonard Tills
 John Trow
 Allan Venables
 Tom Wainwright
 Ken Waring
 Arthur Watson
 John Watts
 Lionel Whitchurch
 Geoffrey Williams
 Keith Williams
 Peter Williams
 George Williams
 Garry Wilson
 Tony Windsor
 Michael Woodcock
 Keith Youd



—INSIST ON—
COUNTRY MAID



FOR GOOD BREAD
FRESH TO THE LAST SLICE



**MADE IN THE LARGEST AND MOST MODERN
BAKERY IN THE DISTRICT**

To: THE CHESTER GANG SHOW.

It really is grand to hear that you are presenting your Gang Show at the Royalty Theatre this year. I gather it is your first major effort. I do very much wish you the best of luck and hope that all of you will



have learned something from being a member of the cast of a Gang Show, no matter if your part is only of the chorus YOU are a part of a team and your enthusiasm is as important as one who may appear to have more to do. I shall be happy if you feel after the show a greater keenness for your own Troop work and a heartier enthusiasm to get on with the job. Make sure boys you give of your best so that your audience will be looking forward to your next Gang Show. Once again every good wish for a great success.

Yours aye,

[Signed] RALPH READER.

C. H. BOUNDS

OFFICIAL OUTFITTER TO
THE CHESTER & DISTRICT BOY SCOUTS'
ASSOCIATION

All Uniforms for Scouts, Cubs, Guides
Brownies. Stocks of Camp Equipment
Tents, Rucsacs, Stoves, Billies, etc.

Sports Outfitter *Men's Outfitter*

9 Grosvenor St., Chester



CAREERS IN THE STEEL INDUSTRY

FOR THOSE
LEAVING SCHOOL OR UNIVERSITY

and who are looking for

AN INTERESTING CAREER
THE IRON & STEEL TRADE OFFERS
TREMENDOUS SCOPE

for

YOUNG MEN WITH INITIATIVE
AND AMBITION

JOHN SUMMERS & SONS LIMITED

MANUFACTURERS OF STEEL SHEETS

HAWARDEN BRIDGE STEELWORKS, NEAR CHESTER

What's this Badge ?



You'll be seeing a lot of it next year, for it is the emblem of the great Jamboree to be held at Sutton Park in 1957 to celebrate B.-P.'s Centenary Year and the Fiftieth Anniversary of the birth of Scouting.

Each day this vast tented city of 36,000 inhabitants will be open to the members of the public, as well as to visiting Scouts and Guides, who will have an opportunity of meeting the Scouts of the World face to face.

There will be plenty to do and to see large scale Arena Displays, Demonstrations, Camp Fires, Exhibitions, Radio Stations, Television Centres, Open Air Cinema, Camp Theatre, etc., etc. YOU'LL be there of course ?

Why not make a note of it right away!

THE WORLD SCOUT JUBILEE JAMBOREE

SUTTON PARK, SUTTON COLDFIELD

— AUGUST 1st to 12th, 1957 —

SCOUTABOUT 1956

One.....IT'S GANG SHOW TIME
 Two.....NEARLY FIFTY YEARS AGO
 Three.....UNDERWORLD
 Four.....MISTER BROWN AND MISS SUZANNE
 Five.....THE OWLS
 Six.....LOOKING BACK
 Seven.....CINEMA 1956
 Eight.....AUDITIONS
 Nine.....OVER THE SEA
 Ten.....LITTLE DEARS
 Eleven.....CLOSE OF DAY

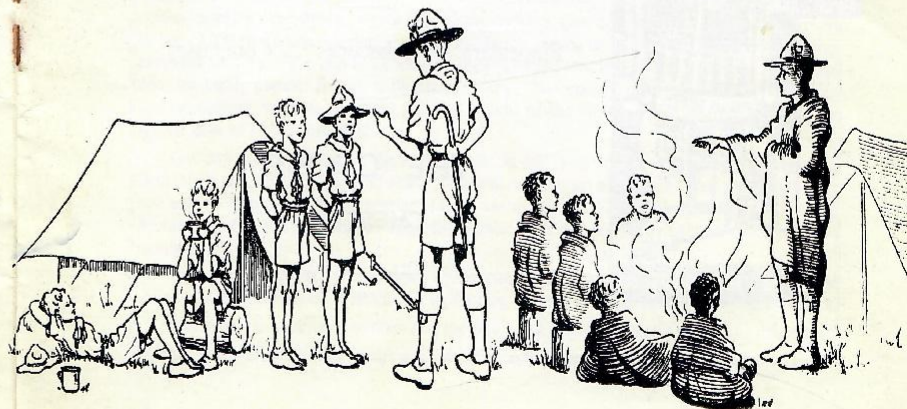
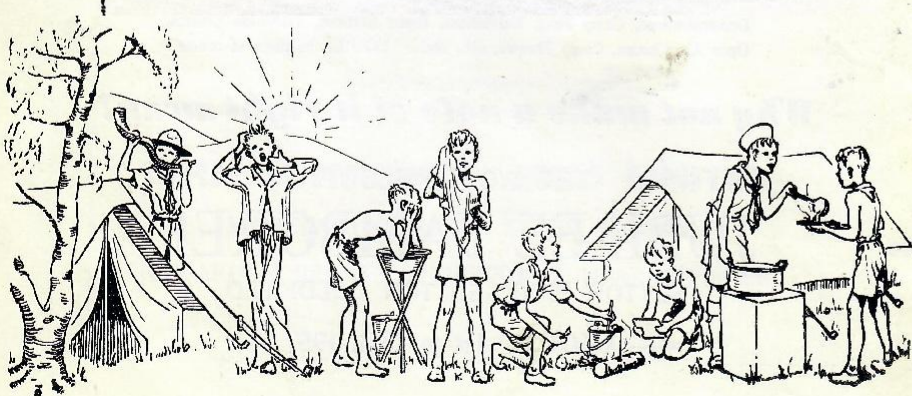
ORCHESTRA

Leader/Piano Billy Brickland
 Alto Sax Ray Cumin
 Tenor Sax Dennis Jones
 Trumpet Derek Mitchell
 Trombone George Knight
 Bass Keith Kennerley
 Drums Ron Cooke
 Guitar Ken Hughes
 Musical Director - Billy Brickland
 Orchestrations by
 Billy Brickland and Dave Pearce

Twelve.....OUT
 Thirteen.....THE CHEER-UPS
 Fourteen.....TAKING THEIR PLACES
 Fifteen.....HAPPY BIRTHDAY
 Sixteen.....CHRISTMAS SCENE
 Seventeen.....OLDEST INHABITANTS
 Eighteen.....CHESTER GIRLS' CHOIR
 Nineteen.....ALADDIN & HIS WONDERFUL LAMP
 Twenty.....THE PIN-UPS
 Twenty-One.....FINALE

GOD SAVE THE QUEEN.

INTERVAL (10 minutes).



ALLAN MORRIS & CO. Ltd.

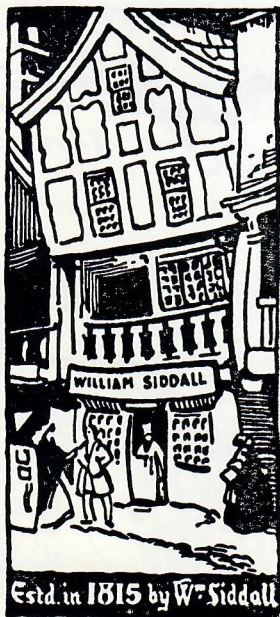
Builders' Merchants

SAND AND GRAVEL

PRECAST PAVINGS

St. Werburgh Street, Chester

Telephone 21151/2



J. D. SIDDALL

Optician

Binoculars

Telescopes

Compasses

THE CROSS

CHESTER

TEL. 20222

A TOWN OF SCOUTS WILL CAMP AT SUTTON COLDFIELD

BY JOHN BAKER.

(As published in the "Express and Star," Wolverhampton, on October 4th).

NEXT summer's mammoth jubilee, "J.I.M.," at Sutton Park, features the greatest scout army seen in Britain for 28 years . . . 36,000 in an international force as big as two wartime military divisions. In a 20-mile radius around this monster festival another division of some 15,000 scouts will be encamped ready to visit the Park during the July 29—August 14 celebrations. In all, 78 countries will send scouts to the J.I.M., staged to celebrate the birth centenary of Robert Baden-Powell, founder of Scouting, and in celebration of the movement's 50-year milestone.

What is a J.I.M. ?

In full—"Jamboree Indaba Moot" : Jamboree, a camp of boy and senior scouts ; Indaba, a gathering of world scouting officers ; Moot, for Rover Scouts aged 18-24. Normally, World Jamborees are held every fourth year. Last year's was in Canada. The 1957 event is a special "extra" in the series.

Figures give an impressive idea of the Sutton Park army, which will be visited daily by an estimated 90,000 visitors. There will be 25,000 scouts, plus 5,000 rovers, 5,000 "scouters," 1,000 camp staff—the whole in nine unit camps, plus headquarters, and camp centre. Of these, 8,750 will be British, Germany heading the foreign "invasion" with a regiment of 2,600. Smallest contingent : Mauritius, one scout.

More figures show the grandeur of one of the biggest scouting shows on earth ; each day base camp will require 20,000 loaves of bread, 10,000 gallons of milk, 500,000 gallons of water—and some 20,000 postal packets to be daily handled by the camp post office. This means the organisers face the task of feeding a canvas town in population roughly half the size of Chester. It would be easier if all the scouts ate English food. But, of course, racial and religious characteristics denote many unusual diets . . . and these must be assisted. World jamborees are noted for their comfort under canvas.

Sutton Coldfield's authorities are already supervising preliminary contract work in the Park, and Midland councils have answered an S.O.S. for 1,200 dustbins. Furthermore, English scouts have removed 50 tons of stones from the camp sites. When the big show opens, police and fire services will be helped by camp police totalling 120 scouts, and a battle-squad of 24 fire-fighters. In this great phalanx of budding manhood there will be only a few women . . . cubmasters who are entitled to attend the Indaba. But representatives of Scouting's sister movement, the Girl Guides, will be invited to various ceremonies during the J.I.M.

What will the visitor see when he passes through the 56-foot steel entrance archway. Scouts everywhere—under canvas, in troops of 32 on quarter-acre plots ; scouts cooking, out in working parties, printing newspapers, staging exhibitions, building gateways, parading and giving displays in the 10,000-seat arena, playing in the camp theatre, acting as guides, and, of course, holding camp-fire sessions. The aim of J.I.M. is to foster international goodwill in a working fellowship, and one highly popular feature is the scout-to-scout "swopping" of hampers filled with titbits, and, sometimes, valuable souvenirs. In 1957, some of the most valuable souvenirs will be the special issue of J.I.M. postage stamps.

One day during the Jubilee the Park population will swell further as it receives thousands of Britain's Wolf Cubs on a goodwill visit. They will certainly set a new Cub "gate" record for any one event. Britain's previous greatest J.I.M. was at Arrowe Park, Birkenhead, in 1929, when Scouting celebrated its coming of age. But Sutton Park will be greater in significance if not in numbers.

Following the J.I.M., "Hospitality Committees" throughout the country will help foreign scouts who want to stay on in Britain for sightseeing. Those committees are already hard at work.

It is thanks to backroom workers that the Boy Scout Movement is still a powerful counterpull to the tentacles of juvenile delinquency and adolescent apathy.

Chester Co-operative Society Ltd.

*Save as you Spend on your
Christmas Shopping*

ALL OUR DEPARTMENTS ARE AT YOUR SERVICE

DIVIDEND 1/4d. IN THE £

★ CHESTER THEATRE CLUB ★

WED. to SAT., JANUARY 23rd to 26th
IN THE CATHEDRAL REFECTORY

“Vanity Fair”

Adapted from Thackeray's famous novel

WED. to FRI., MAY 15th to 17th
ASSEMBLY ROOMS

PLAY TO BE ANNOUNCED LATER

Owing to the forthcoming alterations to this Theatre, the Club regrets that it is unable to present its fifth Annual Royalty Theatre production. We hope to return next year, but ask all who love the theatre to continue to support our plays wherever they are presented.

SCOUTABOUT

THIS is our first District Show. It is also the first time that SCOUTABOUT has appeared on the stage of the Royalty Theatre. In 1953 the 8th and 13th Chester Groups combined to produce "Scoutabout" in the Cathedral Refectory, a venture that was repeated in 1954. Last year they were joined by the 1st Upton Group, and the encouragement and support we received from the public on that occasion left us no alternative—it just had to be the Royalty Theatre for 1956 ! 124 Cubs, Scouts and Scouters of 12 local Groups are taking part.

So here, for your entertainment and enjoyment, is SCOUTABOUT, modelled on the wonderful Gang Show produced year by year in London by Ralph Reader. We hope that Chester folk will give us the same support as that accorded to other provincial shows.

We should like to express our warm appreciation of the co-operation we have received from the Directors, Manager and Staff of the Royalty Theatre. This is the third show in which Billy Brickland has been Musical Director ; he and his Orchestra are now part of Scoutabout—and the Gang think they are pretty good ! The amount of work done behind the scenes is just terrific and we are very grateful to all those ladies and gentlemen who have found time to give us a hand in so many ways.

The Gang would like to wish you all a truly peaceful Christmas and a really happy and prosperous New Year.

The cast of "Scoutabout" are delighted to welcome to the performance on Tuesday evening Lord Leverhulme (Lord Lieutenant of Cheshire and President of the Chester (West) County Association of Boy Scouts) and Lady Leverhulme, the Mayor and Mayoress of Chester (Mr. and Mrs. F. Hart-Davies) the Sheriff of Chester (The Rev. E. J. Lawson) and Mrs. Lawson, the Chairman of the Cheshire County Council (Alderman J. Wesley Emberton) and Mrs. Emberton, Sir Geoffrey Bates, Sir John Nicholson, Bart. (Chairman of the Cheshire West County Association) and Lady Nicholson, Mr. and Mrs. Hugh Carswell, Lt.-Col. and Mrs. T. S. Bigland (County Commissioner for Boy Scouts), and hope that they will enjoy the Show to the full. They also extend a welcome to Mr. Leo Maris (Field Commissioner) who is attending the Thursday evening performance.

We wish to acknowledge

The Directors, General Manager and Staff of the Royalty Theatre for splendid co-operation and help ; Ralph Reader for most of the programme material ; Rehearsal facilities—the Governors of the College School ; Miss Hilda Catherall, The Music Shop, St. Werburgh Street, Chester, for Advance Bookings ; Signs—Harold Faulkner ; Hired West End Costumes—Peter Dunlop Ltd. ; Wigs by Bert, London ; Photography—Bill Rowlands ; Make-up—The Bache Pharmacy, Upton-by-Chester ; Invaluable help—J. Shaw, Esq., A.D.C.C., West Cheshire ; the S.W. Cheshire and Stoke-on-Trent Boy Scouts' Associations ; Press—"Chester Chronicle," "Cheshire Observer," "The Ellesmere Port Pioneer," I.H.Q. of the Boy Scouts' Association for help and guidance in many ways ; Messrs. T. G. Burrells Ltd. and Messrs. George Taylor (Chester) Ltd., for window displays ; the Chester Theatre Club, N. G. Cottam, Esq. (Cheshire Rural Community Council) ; Mrs. E. M. Dickson, Commissioner for Guides ; Messrs. Tristrams Ltd., for garage facilities ; George Thompson for the cover design ; also our Advertisers and other generous supporters ; and YOU the Patrons for your excellent support, either in parties or individually.

HODSON *for Hairdressing*

AT

9, Upper Northgate Street, Chester

Telephone 21281

BOTH

LADIES' & GENTLEMEN'S

**We are Tobacconists too and would be pleased to
supply your needs**

ESTABLISHED 1896 — YET STILL MODERN AS TOMORROW



Three-quarters of a Century of Trading

This modern and attractive store at

55/57 FOREGATE STREET

includes the following departments :

Men's Outfitting and Clothing

Sports and Travel Goods

Furniture and Bedding

Carpets and Linoleums

T. G. BURRELL Ltd.

Established 1877

Telephone 24081

District Commissioner—V. E. STONEBRIDGE.

Chairman of the Chester and District Boy Scouts' Association—G. G. SANDERSON.

THE TEAM

Producer.	LESLIE BROOKES
Organiser.	JIM ROCKE
Stage Manager.	JOHN HARRISON assisted by BOB THOMSON.
Stage Staff.	EDDIE AGGY, DEREK ELLISON, HEDLEY HARRISON, KIN LUMBY, HORACE NEWTON, HARRY SHONE and DAVID WILLIAMSON. Settings by BERT LOMAS LTD, and JILLIAN CHESTERS, ELLEN McCABE, ELIZABETH MORRIS, FRED ARCHER and BRUCE NICHOLSON
Property Manager.	TOM HUGHES
Prompter.	MARJORIE JONAS
Wardrobe Mistress.	ETHEL FAULKNER.
Costumes.	VIOLET ATHERTON, PATRICIA ATKINSON, WINIFRED BARNES, EVALEN BEHAN, ELIZABETH DUBLENE, MARGARET EDWARDS, EDNA ELLIOTT, ENA EVANS, DOROTHY HARRISON, HARRIET HARPER, FLORENCE HART, PATRICIA JELEY, EDNA KELLY, BRENDA LEE, FRANCES MASSEY, MILDRED MORRIS, MADGE MOSS and DAISY WHITE.
Dressers.	Ladies of the Chester and District Boy Scouts' Association.
Make Up.	HILDA JOBLING assisted by ANNE DAVIES, EILEEN GOODMAN, JANE JAMES, SHIRLEY JENKINS, JEAN JONES, OWEN MOORE, BERYL NEEDHAM, JOAN NEWS-TEAD, MARJORIE SALMON, JOYCE THOMAS and EDITH WEBB
Business and Publicity Manager.	BILL COOPER
Treasurer.	Arthur Watson, c/o Lloyds Bank, Chester

HILDA CATHERALL *for Records and Music*

3 ST. WERBURGH STREET, CHESTER

TELEPHONE 23400

CHESTER CO-OPERATIVE SOCIETY LTD.

“Quality Bread”

as sold in our shops and vans . . .

“Better for your Health”

and

“Better for your Pocket”

With **DIVIDEND** at $\frac{1}{4}$ in the £

it cuts the “**Cost of Living**” and is a

sign of **Good and Wise Housekeeping**

COSTAIN

R. COSTAIN & SONS (LIVERPOOL) LIMITED. FOUNDED 1865

Building Contractors

CHESTER BRANCH

***For All Classes of Building Work
Maintenance & Repairs***

TELEPHONE CHESTER 20815

HEAD OFFICE AND WORKS—

BARLOW'S LANE - - - LIVERPOOL 9
TELEPHONE - AINTREE 4141 - 5 lines

—BRANCH OFFICES AND WORKS

BLUNDELLSANDS HOUSE - LIVERPOOL 22
TELEPHONE - GREAT CROSBY - 2264

HANDBRIDGE HOUSE - OVERLEIGH ROAD
TELEPHONE - - CHESTER - - 20815

A Complete Floorcovering Service

When you require New Floorcoverings
come along to the

"FLOORCOVERING SHOP"

WE WILL ESTIMATE FOR, AND FIT YOUR
LINOS, CARPETS, ETC., AT MODERATE COST

Just choose the patterns — We will do the rest

JONES & CROSS LTD.

"The Floorcovering Shop"

Tel. 25557 **FOREGATE STREET, CHESTER** Tel. 25557

S. & A. CLEMENCE
LTD.

Town Hall Square
CHESTER

SELL

"SUNBLEST"

BREAD

*Busy People Shop
the Modern Way*

DUTTONS
SIGARRO STORES

The Self-Service Grocery Store

•
Groceries, Fruit, Vegetables

Wines, Spirits

•
EASTGATE STREET, Chester

Going to London ?

Travel by Crosville Express Coach Service

DAY AND NIGHT SERVICES

(Weekdays and Sundays)

THROUGHOUT THE YEAR

RETURN FARE FROM CHESTER — 31/-

Book at

CROSVILLE

Offices

58 NORTHGATE STREET, CHESTER - - Telephone 21458

"Three Old Arches" Stores

HIGH CLASS GROCERS AND
PROVISION MERCHANTS

CHESTER AGENT for "TIPTREE" CONSERVES



The House for Quality, Value and Service

Deliveries up to 20 miles from Chester

William Jones

(Three Old Arches) Ltd.

48/50 BRIDGE STREET, CHESTER

Telephone 21555 (3 lines)

"EGERTON"

Wallpapers & Paints

The Blue Shops

82 Northgate Street

135 Foregate Street

MORRIS & CO. (Chester) Ltd.

Paint and Varnish Manufacturers



Printed by
W. H. Evans, Sons & Co., Ltd.
Bank Place and
Old Post Office Yard,
The Eastgate, Chester.